

**DESIGN CRITERIA OF SUPPORT STRUCTURES FOR BM&M SCREENS**

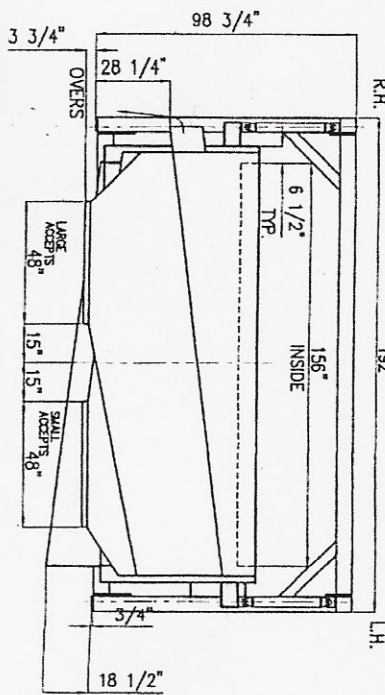
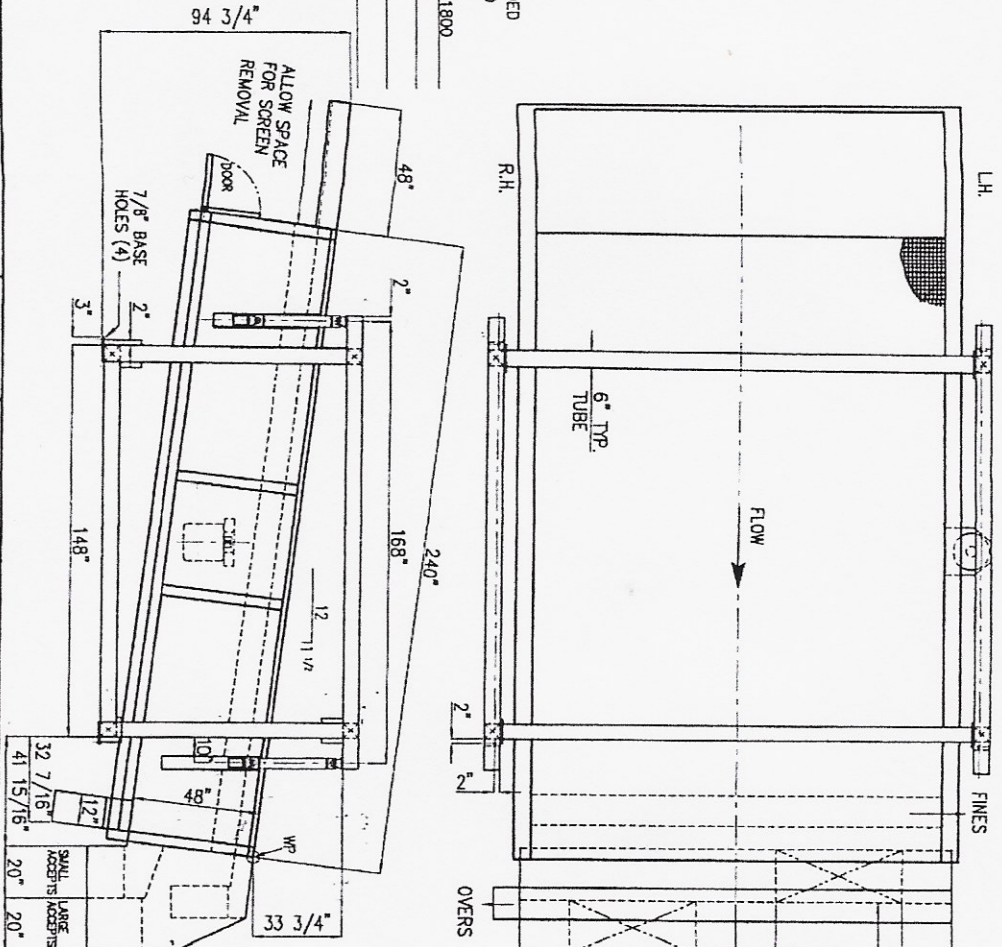
1. VERTICAL DESIGN LOADING DUE TO SCREEN: = 2 X [SCREEN WEIGHT + MAXIMUM PRODUCT LOAD]
2. HORIZONTAL LOADING DUE TO SCREEN: = 3.0% OF VERTICAL DESIGN LOADING, APPLIED IN ANY HORIZONTAL DIRECTION.
3. DEFLECTION OF BEAMS NOT TO EXCEED REQUIREMENTS OF NATIONAL BUILDING CODE
4. THE RESONANT FREQUENCY OF THE LOADED STRUCTURE OR ITS PARTS SHALL BE GREATER THAN 600 CYCLES PER MINUTE OR LESS THAN 150 CYCLES PER MINUTE.
5. PROVIDE 6" HORIZONTAL CLEARANCE FROM STATIONARY OBJECTS.
6. PROVIDE FLEXIBLE LEAD TO MOTOR.
7. DISCHARGE CHUTES MAY BE LEFT OR RIGHT HANDED OR CENTRAL FOR OVERS, FINES & ACCEPTS (SEE BROCHURE) THESE MAY NOT EXTEND MORE THAN 3 FEET FROM END OF SCREEN.

**SPECIFICATIONS:**

TOP SCREEN: 2" ROUND HOLE PUNCHED PLATE  
 MIDDLE SCREEN: 3/4" ROUND HOLE PUNCHED PLATE  
 BOTTOM SCREEN: 5/16" SQUARE OPEN WOVEN WIRE  
 TOTAL MACHINE WEIGHT: 15,000 LBS.

PAINT: BENJAMIN MOORE FOREST GREEN (SEE SPEC)  
 OPTIONS: 1. 48" INFEEED  
 SPARES: 1. 1/4" SQUARE OPEN WOVEN WIRE SCREEN SET  
 2. (1) 773-9/375/11 HANGER ASSEMBLIES

DRIVE MOTOR:  
 INCLUDED  
 NOT INCLUDED  
 RIGHT HAND  
 LEFT HAND  
 HP: 20, RPM: 1800  
 VOLTAGE: 575  
 FRAME: \_\_\_\_\_  
 MFR: WEG



REV	DESCRIPTION	DATE	APPD	CUSTOMER:	PURCHASE ORDER:	DRAWING STATUS:
A	FOR APPROVAL	JUNE 28/01				
B	CHUTES REVISED	JULY 4/01				
C	FOR CONSTRUCTION	JULY 4/01				

BM&M	9377-193rd Street, RR#4 Surrey, B.C. Canada V4N 4E7
13' x 20' 3-DECK SCREEN, BASE MOUNTED	DWG NO. B9-2579
JOB NO.	REV C

Weight 16,000 lbs